



UPC CODE: 00023700100313
 LEGACY PRODUCT CODE: 007099-0928
 PRODUCT CODE: 10070990928

Tyson® Natural Hickory Smoked Bacon, Thick, 1/15 Lb



Reasons to buy

- One, 15 lb. case of Bulk Sliced Tyson® Natural Hickory Smoked Bacon, Thick Sliced
- 6 slices per inch
- Slow smoked for 6 to 8 hours using real hickory wood chips
- Hand selected fresh, never frozen pork bellies
- Hand selected fresh pork bellies

Packaging Information

MASTER CASE

Gross Weight: 16.069 lbs

Net Weight: 15

Cube: 0.508

Length: 17.8125

Height: 4.125

Width: 11.9375

PALLET

TI: 8

HI: 13

Nutritional Information

Serving Size 17g

Servings Per Container Varied

Amount Per Serving Daily Value % *

Calories 100

Calories from Fat 70

Total Fat 8g 12%

Saturated Fat 2.5g 13%

Trans Fat 0g

Polyunsaturated Fat 1g

Monounsaturated Fat 4g

Cholesterol 15mg 5%

Sodium 310mg 13%

Total Carbohydrate 0g 0%

Dietary Fiber 0g 0%

Sugar 0g 0%

Protein 6g 12%

Vitamin A 0%

Vitamin C 0%

Calcium 0%

Iron 0%

To inquire if a signed copy of the product formulation statement or Child Nutrition statement is available for this item, please contact the Tyson Foodservice Customer Relations Team at 1-800-261-4754. Or email tysonfoodservice@casupport.com.

Ingredients

Cured with water; salt, sugar, sodium phosphate, sodium erythorbate, sodium nitrite.

Dietary needs

Storage

Shelf Life

60 Days

Storage Temperature - Maximum

40 °F

Storage Temperature - Minimum

28 °F

Storage Method

Refrigerated

Preparation

Email: tysonfoodservice@casupport.com

Phone Number: 1-800-261-4754

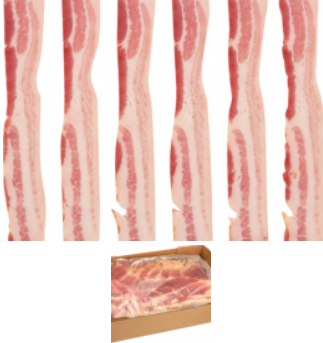
© 2019 Tyson Foods, Inc. Trademarks and registered trademarks are owned by Tyson Foods, Inc. or its subsidiaries.



UPC CODE: 00023700100313
LEGACY PRODUCT CODE: 007099-0928
PRODUCT CODE: 10070990928

Tyson® Natural Hickory Smoked Bacon, Thick, 1/15 Lb

Additional Imagery



Email: tysonfoodservice@casupport.com

Phone Number: 1-800-261-4754

© 2019 Tyson Foods, Inc. Trademarks and registered trademarks are owned by Tyson Foods, Inc. or its subsidiaries.

